

**A46 Newark Bypass  
TR010065/APP/5.2**

**5.2 Consultation Report Annexes**

**Annex E: Published SoCC**

APFP Regulation 5(2)(q)

Planning Act 2008

Infrastructure Planning (Applications: Prescribed Forms and  
Procedure) Regulations 2009

Volume 5

April 2024

Infrastructure Planning

Planning Act 2008

**The Infrastructure Planning  
(Applications: Prescribed Forms  
and Procedure) Regulations 2009**

**A46 Newark Bypass**

Development Consent Order 202[x]

---

**CONSULTATION REPORT ANNEXES**

**ANNEX E: PUBLISHED SOCC**

---

<b>Regulation Number:</b>	Regulation 5(2)(q)
<b>Planning Inspectorate Scheme Reference</b>	TR010065
<b>Application Document Reference</b>	TR010065/APP/5.2
<b>Author:</b>	A46 Newark Bypass Project Team, National Highways

<b>Version</b>	<b>Date</b>	<b>Status of Version</b>
Rev 1	April 2024	DCO Application

## **Contents - Annex E**

**E.1. – PDF of Final SoCC**

**E.2. – Snip of SoCC Published on Webpage**

## E.1. – PDF of Final SoCC

# A46 Newark Bypass

## Statement of Community Consultation (SoCC)

### 1. Introduction

- 1.1 We are publishing this Statement of Community Consultation in connection with proposed improvements to the A46 Newark Bypass between Farndon and Winthorpe roundabouts (referred to throughout this document as 'the scheme').
- 1.2 The purpose of this document is to set out how we will consult the local community about our proposals. It outlines the details of our statutory consultation including where you can find information, how to respond and how consultation responses will be used in the development of the scheme. The document also provides background to the scheme and how the application to construct and operate it will progress.
- 1.3 This document will be available to view and download via the scheme webpage at the following address: [www.nationalhighways.co.uk/a46-newark-bypass](http://www.nationalhighways.co.uk/a46-newark-bypass) after the launch of the statutory consultation and paper copies will be available on request.
- 1.4 To make sure we approach the consultation in the best way for the local community, we have consulted with host and neighbouring local authorities on this document. This includes Newark and Sherwood District Council and Nottinghamshire County Council, the local authorities at district and county level in the area in which the scheme is proposed to be built.

## 2. The application

- 2.1 The scheme is being developed under the Planning Act 2008 and we are publishing this statement under Section 47 (Duty to consult the local community) of that Act.
- 2.2 Under the Planning Act 2008, we are required to make an application to the Secretary of State for Transport through the Planning Inspectorate for a Development Consent Order (DCO) to build and operate the scheme. The Planning Inspectorate will appoint an Examining Authority to examine our application and the Secretary of State for Transport will decide whether the scheme should go ahead based on a recommendation made by the Examining Authority.
- 2.3 The scheme is considered to be a nationally significant road project and therefore a key consideration for the Examining Authority and the Secretary of State for Transport when assessing our DCO application is the National Policy Statement for National Networks (NPS NN), which was published in 2014. The NPS NN policy sets out the need and Government policies for nationally significant infrastructure rail and road projects for England and is the policy against which decisions on major road projects are made. It can be found on the GOV.UK website at this address:  
[www.gov.uk/government/publications/national-policy-statement-for-national-networks](http://www.gov.uk/government/publications/national-policy-statement-for-national-networks)
- 2.4 The best way to provide feedback to inform our final design on the scheme is by taking part in the statutory consultation.
- 2.5 We anticipate that our DCO application for the scheme will be submitted in summer/autumn 2023.
- 2.6 During the pre-examination stage, those with an interest in the scheme can register to participate in the examination. During the examination period, the Examining Authority is likely to hold hearings to examine some issues in greater depth where interested parties can attend and provide their views.
- 2.7 You can find more information about the Planning Inspectorate and the Planning Act 2008 on its National Infrastructure Planning website: <http://infrastructure.planninginspectorate.gov.uk> or by calling the Planning Inspectorate on 0303 444 5000.

### **3. The scheme**

- 3.1 In March 2020, the government's second Road Investment Strategy included a commitment for National Highways to improve the A46 'Trans-Midlands Trade Corridor' between the M5 and the Humber Ports, to create a continuous dual carriageway from Lincoln to Warwick.
- 3.2 The A46 around Newark-on-Trent is the only remaining single carriageway section of this key strategic trunk road. We propose to fill in this gap, eliminating the regular traffic jams and creating improved journey time reliability in this area of the A46 corridor.
- 3.3 National Highways is proposing to improve the A46 Newark Bypass by widening 6.5km of the existing single carriageway to a dual carriageway, to provide two lanes in each direction between Farndon and Winthorpe roundabouts near Newark-on-Trent. The scheme includes:
- Adding traffic signals to Farndon junction to improve traffic flows during peak hours
  - A grade separated junction at Cattle Market with the A46 elevated to pass over the roundabout
  - A short section of new dual carriageway over the A1, including slip roads to Brownhills roundabout and a new bridge to the north of the existing A46 bridge over the A1
  - A new single lane carriageway between Friendly Farmer and Winthorpe roundabouts providing links to the A17, A1 and Newark-on-Trent
  - Enlarging and adding traffic signals to Winthorpe roundabout with the mainline passing through the middle to form a through-about junction
  - Diversion of utilities, environmental mitigation and floodplain compensation
- 3.4 The current scheme objectives are:

#### **Safety**

Improve safety through scheme design to reduce collisions for all users of the A46 scheme.

#### **Congestion**

Improve journey time and journey time reliability along the A46 and its junctions between Farndon and Winthorpe, including all approaches and A1 slip roads.

#### **Connectivity**

Accommodate economic growth in Newark-on-Trent and the wider area by improving its strategic and local connectivity.

## **Environment**

Deliver better environmental outcomes by achieving a net gain in biodiversity, and improve noise levels at Noise Important Areas along the A46 between Farndon and Winthorpe roundabouts.

## **Customer**

Build an inclusive scheme which improves facilities for cyclists, walkers and other vulnerable road users where existing routes are affected.

- 3.5 Due to its potential environmental impacts, the scheme is an Environmental Impact Assessment (EIA) development as defined by the Infrastructure Planning (EIA) Regulations 2017. This means that as part of the DCO application, we will be producing an Environmental Statement that will give information about the likely significant effects of the scheme and the measures proposed to mitigate any negative effects.
- 3.6 As required by the Planning Act 2008, we are publishing a Preliminary Environmental Information (PEI) Report and a Non-Technical Summary (NTS) of the PEI Report, as part of our consultation materials. The purpose of the PEI Report and the NTS of the PEI Report is to help consultees to develop an informed view of the project as part of the statutory consultation by providing sufficient information about the environmental effects of the project.
- 3.7 The PEI Report is a statutory requirement for projects that require an EIA. The PEI Report will document the knowledge to date regarding the environmental baseline and provide an indication of the environmental effects of the proposed scheme and potential mitigation included as part of the scheme design. It will sit alongside the EIA Scoping Report, which outlines what we propose to survey and how we propose to assess the effects of the scheme on the environment.
- 3.8 Additional information about the scheme and the statutory consultation will be included in the consultation materials listed in Section 7 of this document.



## 4. Previous community engagement

- 4.1 A consultation on two different options considered for the scheme design was carried out from December 2020 to February 2021, known as an options consultation.
- 4.2 The options consultation sought opinions from the local community on which option was preferred and why. Consultation materials provided information on the options and included a response form, which included both 'closed' questions and 'open' questions.
- 4.3 Following the options consultation, a Report on Public Consultation was published in April 2021 and a Preferred Route Announcement (PRA) was made in February 2022, which announced Option 2 Modified as the preferred route for the scheme. Option 2 Modified now forms the basis for our plans as we have developed the scheme design for the statutory consultation.
- 4.4 The Report on Public Consultation and the PRA brochure for the scheme have further details including, the result of the options consultation and how we developed the scheme design ahead of the preferred route announcement. These are available to download from the scheme webpage at the following address: [www.nationalhighways.co.uk/a46-newark-bypass](http://www.nationalhighways.co.uk/a46-newark-bypass)

## 5. Statutory consultation

5.1 The statutory consultation will run from 26 October 2022 to 12 December 2022 (closing at 11.59pm). The consultation period provides over 6 weeks after the local half term school holiday for responses to be submitted. Consultation events have been organised to fall outside of any holiday period. During the consultation period we will publish information including:

- The scheme design
- Junction layouts
- Preliminary environmental information
- Emerging arrangements for the construction stage of the scheme

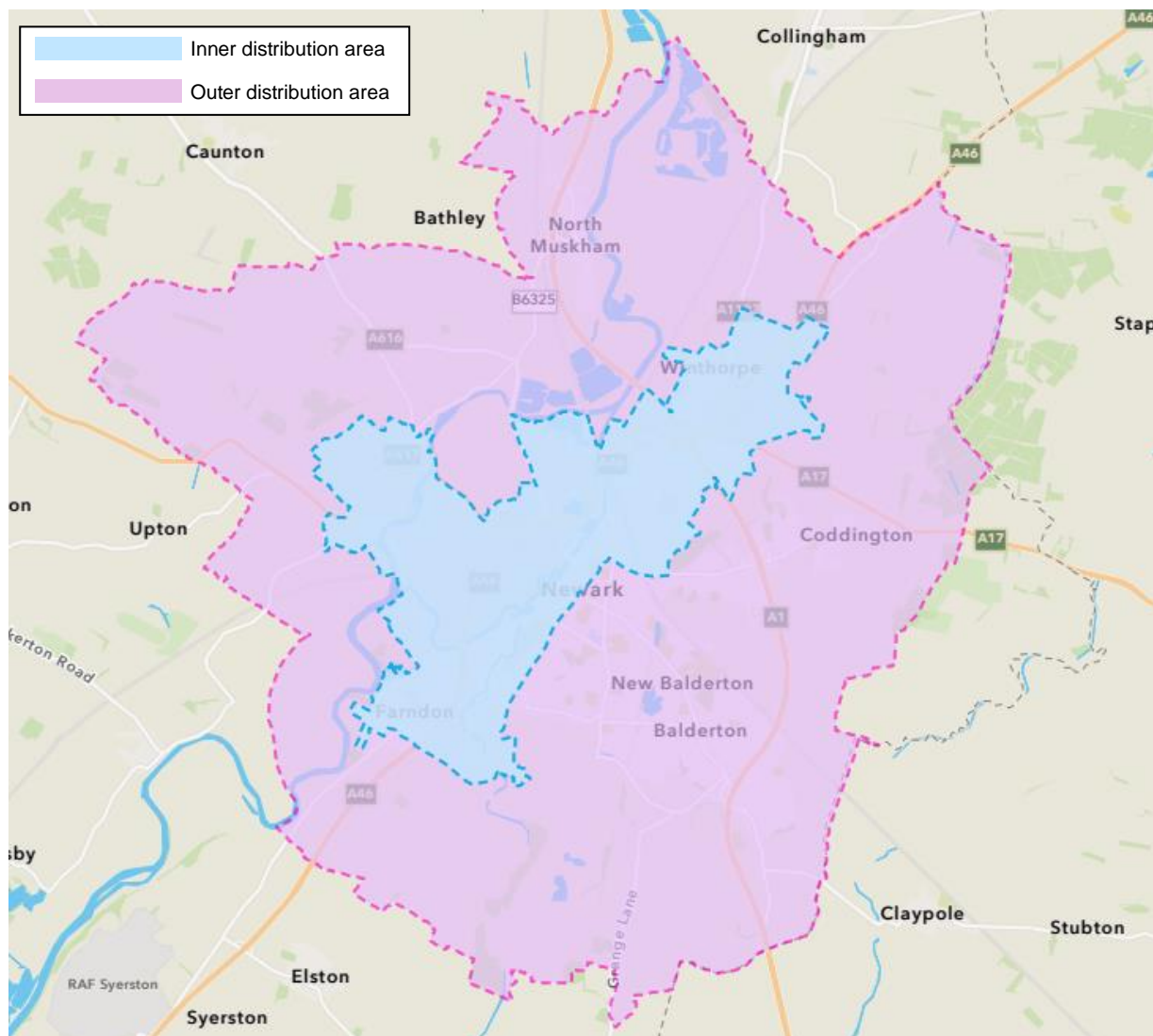
5.2 The objectives of the statutory consultation are to:

- Help local communities understand the nature, and potential local impact of the scheme
- Enable stakeholders to have their say on the scheme with the potential to help guide the evolution of the scheme design
- Explain how previous consultation feedback and stakeholder engagement has helped to shape the scheme
- Provide an opportunity for additional environmental mitigation measures to be identified for consideration and potential inclusion within the scheme design
- Identify potential opportunities for the scheme to support wider strategic or local objectives

5.3 Anyone who is interested in the scheme is welcome to take part. We will listen to everyone's views, and we will consider all opinions before we submit our DCO application.

5.4 In consultation with Newark and Sherwood District Council and Nottinghamshire County Council, we have developed distribution areas for our consultation materials, shown in Figure 1. The distribution areas are based on the areas used for the options consultation and have been reviewed and increased in size to reflect the latest scheme proposals. It has been created using professional assessment on impact of the scheme and the locations of key stakeholders.

**Figure 1: Consultation material distribution areas**



5.5 We will communicate with people living and working in the distribution areas to let them know about the statutory consultation by posting information directly to them.

5.6 Properties located within the inner distribution area will receive consultation brochures and response forms directly in the post. Properties located within the outer distribution area will receive an information postcard providing them with details about the statutory consultation.

- 5.7 We recognise that people who live and work beyond the identified distribution areas may also have an interest in our proposals and may have participated in the options consultation. To give these individuals and organisations the opportunity to participate we will aim to raise awareness of the statutory consultation in the following ways:
- Using publicity methods to share information with a variety of audiences including social media, websites, press releases and newspaper notices
  - Hosting events online and using a mobile engagement van to engage with different road users
  - Seeking to use community-based communication channels such as Facebook groups and parish council newsletters
- 5.8 We are undertaking an Equality Impact Assessment (EqIA) for the scheme. As part of this process we have consulted with Newark and Sherwood District Council and Nottinghamshire County Council for ways of identifying and engaging with local organised or demographic groups with specific needs. Information in the EqIA has been used to inform our consultation approach to make it as inclusive and accessible as possible to the local community.
- 5.9 We are committed to ensuring the statutory consultation process and associated communications reach as many parts of the community as possible. We have identified a range of 'under-represented' or 'seldom heard' groups and individuals who may be less likely to participate in or respond to conventional consultation techniques. These are aligned to groups identified in Nottinghamshire County Council's and Newark and Sherwood District Council's Statement of Community Involvement (SCI) and include:
- Young people and older adults
  - Ethnic minorities, including gypsies and travellers
  - People with disabilities
  - Homeless people
- 5.10 Our consultation methodology has been developed to accommodate communicating as effectively as possible with these groups. We will identify bodies and organisations representing these groups to ensure our approach meets the specific needs of their members. Requests for specific consultation activity to cater for their members will be considered on a case-by-case basis.

5.11 The table below shows methods we will use to promote the statutory consultation and gather feedback on the scheme proposals. Further detail regarding consultation materials and information can be found in Section 7 of this document.

<b>Method</b>	<b>Detail</b>
<b>Consultation brochure</b>	The brochure will contain details of the scheme, including proposed preliminary environmental mitigation measures and updates to the preliminary scheme design. It will also include details of consultation events and methods available for submitting consultation responses.
<b>Consultation response form</b>	The consultation response form will contain both open and closed questions relating to the scheme and aims to capture feedback from all stakeholders interested in or impacted by the scheme. Printed copies of the response form will be available as outlined in Section 7 of the document; an electronic version will also be available via the scheme webpage at the following address: <a href="http://www.nationalhighways.co.uk/a46-newark-bypass">www.nationalhighways.co.uk/a46-newark-bypass</a>
<b>Information letters and postcards</b>	Information letters will be posted to stakeholders in the inner distribution area, shown in Figure 1, along with the consultation brochure and consultation response form. Information postcards will be posted to stakeholders within the outer distribution area, shown in Figure 1.
<b>Statutory notices</b>	Statutory notices will publicise the proposed DCO application and this Statement of Community Consultation document in local newspapers (The Newark Advertiser and The Nottingham Post) on 13 October 2022 and 20 October 2022 and a national newspaper (The Times) and the London Gazette on 20 October 2022.
<b>Scheme webpage</b>	The scheme webpage will provide information about the scheme as well as electronic versions of all consultation materials: <a href="http://www.nationalhighways.co.uk/a46-newark-bypass">www.nationalhighways.co.uk/a46-newark-bypass</a>
<b>Social media</b>	The consultation will be promoted using social media channels, including Twitter and Facebook. We will also approach some stakeholders to help promote the consultation using their social media channels.
<b>Press releases</b>	Press releases will be distributed to local news and media outlets on key dates throughout the consultation.

<b>Method</b>	<b>Detail</b>
<b>Information posters</b>	Information posters with details about the consultation will be displayed at public locations including event venues and deposit locations.
<b>Consultation events</b>	In person events will be held to give people the opportunity to speak to members of staff to find out information about the scheme and the consultation. Please see Section 7 of this document for further information about the events.
<b>Online information events</b>	Online information events will be held where we will present information about the scheme and the statutory consultation as well as a live question and answer session. Information about these events will be publicised on the scheme webpage at the following address: <a href="http://www.nationalhighways.co.uk/a46-newark-bypass">www.nationalhighways.co.uk/a46-newark-bypass</a>

## 6. Responding to the statutory consultation

6.1 Responses to the statutory consultation must be received by 11:59pm on 12 December 2022.

6.2 Responses posted on the statutory consultation closing date will still be accepted.

6.3 Responses can be submitted using the following methods during the consultation period:

- Completing a copy of the response form and posting it back to the project team using the scheme freepost address:

### **Freepost A46 NEWARK BYPASS**

There is no need for a stamp when using this freepost address, the response form can be placed in an envelope with the freepost address written on the front

- Completing the online version of the response form available via the scheme webpage at the following address:  
[www.nationalhighways.co.uk/a46-newark-bypass](http://www.nationalhighways.co.uk/a46-newark-bypass)
- Giving a copy of a response form to a member of staff at one of the consultation events

## 7. Statutory consultation information and materials

7.1 Further information about the scheme can be found in the following materials that have been produced as part of the consultation:

- Consultation brochure and response form
- General Arrangement and Plan and Profile Drawings
- Preliminary Environmental Information (PEI) Report and Non-Technical Summary (NTS) of the PEI Report
- Section 47 Notice and Section 48 Notice
- Fly-through video

7.2 Printed copies of our consultation brochure and consultation response form will be available free of charge at deposit locations and consultation events, listed in the tables below, throughout the consultation period. Copies of other documents and plans will be available on the scheme webpage and for inspection only at our consultation events. Printed copies of consultation documents can be supplied on request, but there maybe a charge applied in certain cases to cover the cost of printing and postage.

### 7.3 Deposit locations

The opening times of the deposit locations may be subject to change due to circumstances out of our control. If in doubt, please contact a location before visiting.

<b>Deposit Location</b>	<b>Opening hours</b>	
<b>Bridge Community Centre</b> Lincoln Road, Newark-on-Trent, NG24 2DQ	Monday to Sunday:	8.30am to 9pm
<b>Newark &amp; Sherwood District Council</b> Castle House, Great North Road, Newark-on-Trent, NG24 1BY	Monday to Friday:	9am to 5pm
<b>Newark Indoor Bowls Centre</b> Newark Showground, Lincoln Road, Winthorpe, Newark-on-Trent, NG24 2NY	Monday to Friday Saturday and Sunday	9.45am to 9.30pm 9.30am to 2.30pm
<b>Newark Library</b> Balderton Gate, Town Centre Newark-on-Trent, NG24 1UW	Monday: Tuesday: Wednesday: Thursday: Friday: Saturday: Sunday:	9am to 6.30pm 9am to 6pm 9am to 6.30pm 9am to 6pm 9am to 6pm 9am to 4pm Closed
<b>The Fox Inn</b> Main Street, Newark-On-Trent, NG23 5QP	Monday to Thursday: Friday and Saturday: Sunday:	12 noon to 10pm 12 noon to 11pm 12 noon to 8pm
<b>The Lord Nelson</b> Gainsborough Road, Winthorpe, Newark-on-Trent, NG24 2NN	Monday to Saturday: Sunday:	10am to 10pm 10am to 7pm
<b>The Lord Ted</b> Farndon Road, Newark-on-Trent, NG24 4SW	Monday to Sunday:	11am to 11pm



#### 7.4 Consultation events

In person events will be held using community venues and a mobile engagement van, to give stakeholders the opportunity to speak to members of the project team about the scheme. Any changes to the consultation events will be communicated on the scheme webpage and on social media. The project team can also be contacted ahead of any event to confirm that it is still taking place using the contact details at the end of this section.

Details of the events are as follows:

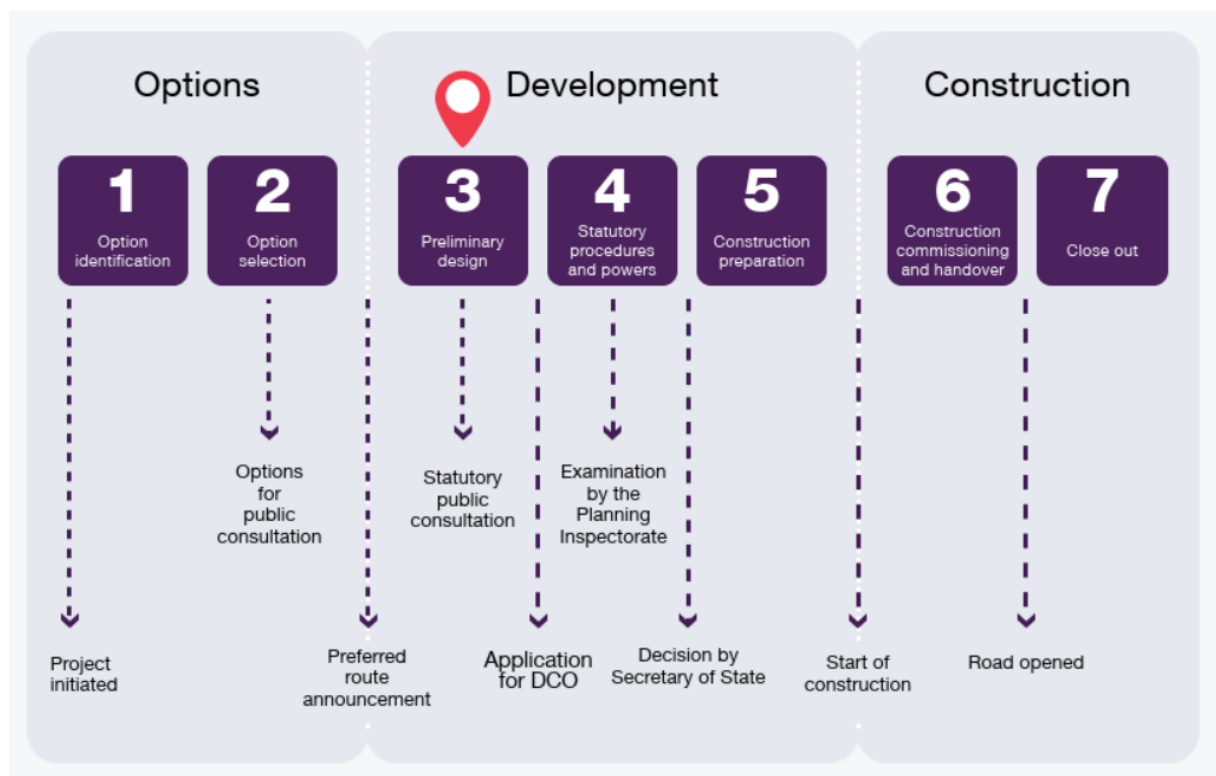
Location	Date	Time
<b>Newark Showground (Engagement Van)</b> Gift and Food Show, Lincoln Road, Winthorpe, Newark-on-Trent, NG24 2NY	29 October 2022	9am to 5pm
<b>Newark Showground (Engagement Van)</b> Gift and Food Show, Lincoln Road, Winthorpe, Newark-on-Trent, NG24 2NY	30 October 2022	9am to 4pm
<b>Farndon Memorial Hall</b> Marsh Lane, Farndon, Newark-on-Trent, NG24 3SZ	8 November 2022	3pm to 8pm
<b>Newark Town Hall</b> Market Place, Newark-on-Trent, NG24 1DU	9 November 2022	11am to 4pm
<b>Bridge Community Centre,</b> Lincoln Road, Newark-on-Trent, NG24 2DQ	10 November 2022	3pm to 8pm
<b>Winthorpe Community Centre,</b> Woodlands, Winthorpe, Newark-on-Trent, NG24 2NL	12 November 2022	12pm to 5pm
<b>The Fox Inn,</b> Main Street, Newark-on-Trent, NG23 5QP	15 November 2022	3pm to 8pm
<b>Newark Market Place (Engagement Van)</b> Market Place, Newark-on-Trent, NG24 1DU	19 November 2022	10am to 2pm
<b>Northgate Retail Park, (Engagement Van)</b> Northgate, Newark-on-Trent, NG24 1GA	20 November 2022	10am to 2pm
<b>Newark Town Hall,</b> Market Place, Newark-on-Trent, NG24 1DU	30 November 2022	11am to 4pm

7.5 Further information about the statutory consultation or about requesting consultation materials in alternative formats (including large print and additional languages) is available from the project team using the details below:

Email address: **A46newarkbypass@nationalhighways.co.uk**  
 Telephone number: **0300 123 5000 (24/7 Customer Contact Centre)**  
 Postal address: **Freepost A46 NEWARK BYPASS**

## 8. Next steps

- 8.1 Where we consider it appropriate, and before submitting our DCO application, we may choose to undertake further targeted consultation on certain changes to the scheme, made in response to consultation feedback or updated technical information.
- 8.2 We will record and carefully consider all responses received during the statutory consultation which will be taken into account when finalising our DCO application before we submit it to the Planning Inspectorate.
- 8.3 We will summarise our findings in a Consultation Report which will include a description of how our application was informed by the responses received, and outline any changes made as a result of the statutory consultation. The Consultation Report forms part of our application to the Secretary of State, as required by Section 37(3) of the Planning Act 2008.
- 8.4 The Planning Inspectorate will decide whether the application meets the required standards to proceed to examination and will determine whether our statutory consultation has been adequate.
- 8.5 For more information visit the scheme webpage at the following address: [www.nationalhighways.co.uk/a46-newark-bypass](http://www.nationalhighways.co.uk/a46-newark-bypass) where you can also sign up for email alerts whenever the webpage is updated. The image below shows where we are in the process and the next steps:



## 9. Your data, your rights

- 9.1 In line with UK data protection legislation, National Highways are required to explain to you – consultees, stakeholders and customers – how your personal data will be used and stored.
- 9.2 National Highways adheres to the government’s consultation principles, the Planning Act 2008 and the Highways Act 1980 as required and may collect personal data to help shape development of highways schemes.
- 9.3 Personal data collected by the project team will be processed and retained by National Highways and its appointed contractors until the scheme is complete.
- 9.4 In some instances consultation responses may also be sent to the Planning Inspectorate. To view the Planning Inspectorate’s information relating to Data Protection at Examination events please visit:  
[infrastructure.planninginspectorate.gov.uk/help/privacy-notice/](https://infrastructure.planninginspectorate.gov.uk/help/privacy-notice/)
- 9.5 Under the GDPR regulations you have the following rights:
- Right of access to the data (Subject Access Request)
  - Right for the rectification of errors
  - Right to erasure of personal data – this is not an absolute right under the legislation
  - Right to restrict processing or to object to processing
  - Right to data portability

If, at any point, National Highways plans to process the personal data we hold for a purpose other than that for which it was originally collected, we will tell you what that other purpose is. We will do this prior to any further processing taking place and we will include any relevant additional information, including your right to object to that further processing.

- 9.6 You have the right to lodge a complaint with the supervisory authority, the Information Commissioners Office.
- 9.7 If you’d like more information about how we manage data, or a copy of our privacy notice, please contact:

**DataProtectionAdvice@nationalhighways.co.uk**

## **E.2. – Snip of SoCC Published on Webpage**

- [PEI Volume 2 Figure 6.1 Operational Receptors](#)
- [PEI Volume 2 Figure 6.2 Air Quality Monitoring](#)
- [PEI Volume 2 Figure 6.3 Construction Dust Buffer](#)
- [PEI Volume 2 Figure 7.1 Cultural Heritage Designated Assets](#)
- [PEI Volume 2 Figure 7.2 Cultural Heritage Non-Designated Assets](#)
- [PEI Volume 2 Figure 7.3 Cultural Heritage Events](#)
- [PEI Volume 2 Figure 8.1 Zone of Theoretical Visibility - Existing](#)
- [PEI Volume 2 Figure 8.2 Landscape Character Areas](#)
- [PEI Volume 2 Figure 8.3 Visual Receptor Plan](#)
- [PEI Volume 2 Figure 8.4 Zone of Theoretical Visibility - Post-development](#)
- [PEI Volume 2 Figure 9.1 Statutory and Non-Statutory Designated Sites within 2km of the Draft Order Limits](#)
- [PEI Volume 2 Figure 10.1 Potential Sources of Contamination](#)
- [PEI Volume 2 Figure 12.1 Noise Important Areas](#)
- [PEI Volume 2 Figure 12.2 Noise Monitoring Locations](#)
- [PEI Volume 2 Figure 13.1 Local Impact Area](#)
- [PEI Volume 2 Figure 13.2 Wider Impact Area](#)
- [PEI Volume 2 Figure 13.3 Residential Properties Situated within the Local Impact Area](#)
- [PEI Volume 2 Figure 13.4 Community Land Assets Situated within the Local Impact Area](#)
- [PEI Volume 2 Figure 13.5 Open Spaces and Recreational Routes](#)
- [PEI Volume 2 Figure 13.6 Businesses Situated within the Local Impact Area](#)
- [PEI Volume 2 Figure 14.1 Surface Water Constraints](#)
- [PEI Volume 2 Figure 14.2 Flood Zones](#)
- [PEI Volume 2 Figure 14.3 Groundwater Constraints](#)
- [PEI Volume 3 Non-Technical Summary](#)
- [Section 47 Notice](#)
- [Section 48 Notice](#)
- [Statement of Community Consultation](#)